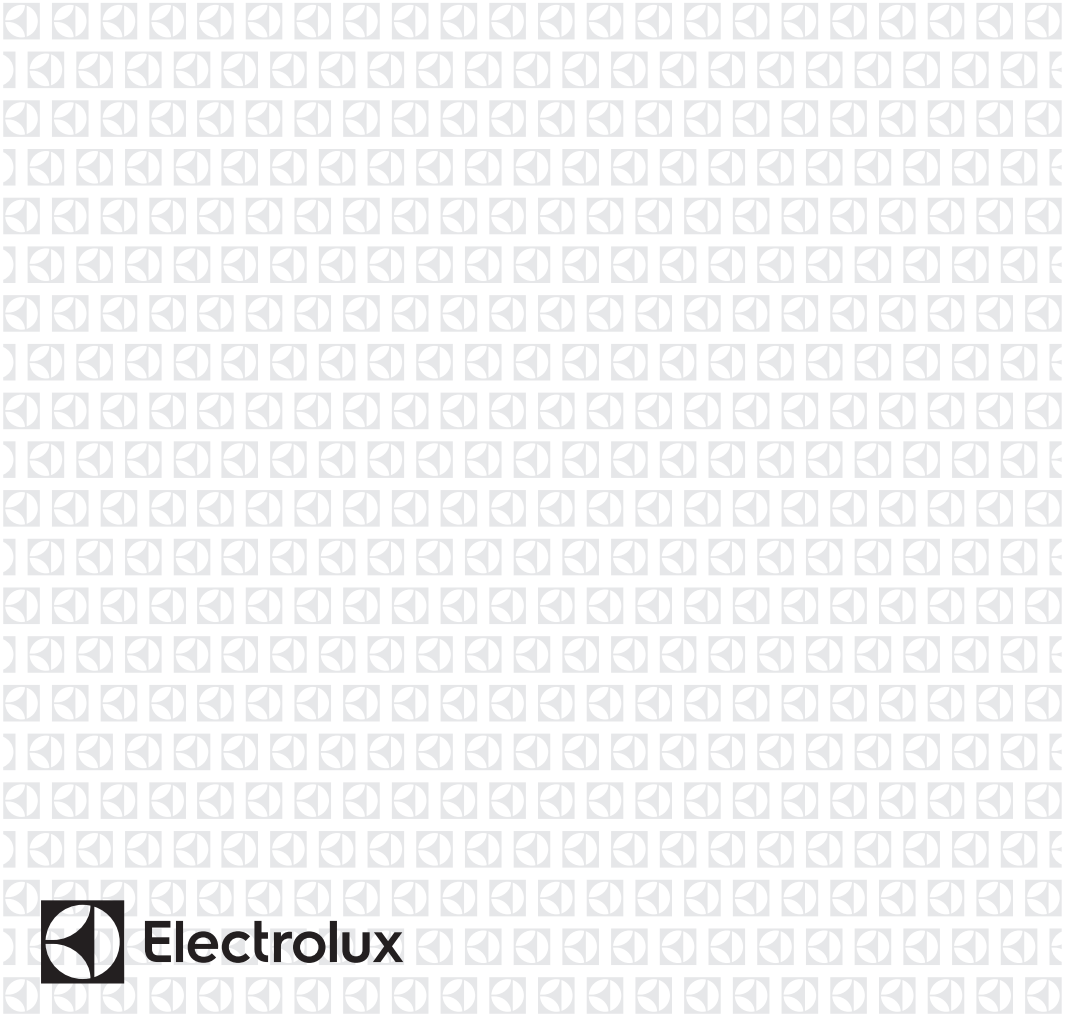




EN Control panel

User Manual



CONTENTS

1. SAFETY INFORMATION.....	2
2. SAFETY INSTRUCTIONS.....	4
3. PRODUCT DESCRIPTION.....	5
4. DAILY USE.....	5
5. HINTS AND TIPS.....	6
6. TROUBLESHOOTING.....	6
7. INSTALLATION.....	7
8. TECHNICAL DATA.....	11
9. GUARANTEE	11

WE'RE THINKING OF YOU

Thank you for purchasing an Electrolux appliance. You've chosen a product that brings with it decades of professional experience and innovation. Ingenious and stylish, it has been designed with you in mind. So whenever you use it, you can be safe in the knowledge that you'll get great results every time.

Welcome to Electrolux.

Visit our website for:



Get usage advice, brochures, trouble shooter, service information:
www.electrolux.com/webselfservice



Register your product for better service:
www.registerelectrolux.com



Buy Accessories, Consumables and Original spare parts for your appliance:
www.electrolux.com/shop


CUSTOMER CARE AND SERVICE

Always use original spare parts.

When contacting our Authorised Service Centre, ensure that you have the following data available: Model, PNC, Serial Number.

The information can be found on the rating plate.

 **Warning / Caution-Safety information**

 **General information and tips**

 **Environmental information**

Subject to change without notice.

1. SAFETY INFORMATION

Before the installation and use of the appliance, carefully read the supplied instructions. The manufacturer is not responsible for any injuries or damages that are the result of incorrect installation or usage. Always keep the

instructions in a safe and accessible location for future reference.

1.1 Children and vulnerable people safety



WARNING!

Risk of suffocation, injury or permanent disability.

- This appliance can be used by children aged from 8 years and above and persons with reduced physical, sensory or mental capabilities or lack of experience and knowledge if they have been given supervision or instruction concerning the use of the appliance in a safe way and understand the hazards involved.
- Do not let children play with the appliance.
- Keep all packaging away from children and dispose of it appropriately.
- If the appliance has a child safety device, this should be activated.
- Children shall not carry out cleaning and user maintenance of the appliance without supervision.
- Children aged 3 years and under must be kept away from this appliance when it is in operation at all times.

1.2 General Safety

- Before any maintenance operation, deactivate the appliance and disconnect the mains plug from the socket.
- Only a qualified person must install this appliance and replace the cable.
- Do not use water spray or steam cleaner to clean the control panel.
- The control panel must be connected to specified heating unit with matching colours of connectors, to avoid possible hazard.
- If the mains power supply cable is damaged, it must be replaced by the manufacturer, its Authorised

Service Centre or similarly qualified persons to avoid an electrical hazard.

2. SAFETY INSTRUCTIONS

2.1 Installation



WARNING!

Only a qualified person must install this appliance.



WARNING!

During installation in combustible matter, NIN SEV 1000 and fire protection guidelines and regulations of the Association of Cantonal Fire Insurance shall be strictly adhered to.



WARNING!

Fully obey the laws, ordinances, directives and standards in force in the country where you use the appliance (safety regulations, recycling regulations, electrical safety rules etc.)

- Remove all the packaging.
- Do not install or use a damaged appliance.
- Follow the installation instructions supplied with the appliance.

2.2 Electrical Connection



WARNING!

Risk of fire and electric shock.

- All electrical connections should be made by a qualified electrician.
- The appliance must be earthed.
- Before carrying out any operation make sure that the appliance is disconnected from the power supply.
- Use the correct electricity mains cable.
- Do not let the electricity mains cable tangle.
- Make sure the mains cable or plug (if applicable) does not touch the hot appliance or hot cookware, when you

connect the appliance to the near sockets

- Make sure the appliance is installed correctly. Loose and incorrect electricity mains cable or plug (if applicable) can make the terminal become too hot.
- Make sure that a shock protection is installed.

2.3 Use



WARNING!

Risk of injury, burns and electrical shock.

- Use the appliance only to operate the hob.
- This appliance is for household use only.
- Do not change the specification of this appliance.
- Do not let the appliance stay unattended during operation.
- Do not operate the appliance with wet hands or when it has contact with water.
- Set the cooking zone to "off" after each use.
Do not rely on the pan detector.
- Do not use the appliance as a work surface or as a storage surface.



WARNING!

Risk of damage to the appliance.

- Do not keep hot cookware on the control panel.
- Be careful not to drop objects or cookware on the appliance. Its surface can be damaged.
- Do not activate the cooking zones with empty cookware or without cookware.

2.4 Care and Cleaning



WARNING!

Risk of damage to the appliance.

- Clean the appliance with a moist soft cloth. Only use neutral detergents. Do not use any abrasive products, abrasive cleaning pads, solvents or metal objects.

2.5 Disposal



WARNING!

Risk of injury or suffocation.

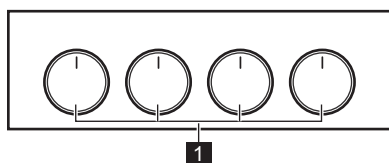
- Contact your municipal authority for information on how to discard the appliance correctly.
- Disconnect the appliance from the mains supply.
- Cut off the mains cable and discard it.

2.6 Service

- To repair the appliance contact an Authorised Service Centre.
- Use original spare parts only.

3. PRODUCT DESCRIPTION

3.1 Control panel layout



1 Control knobs

4. DAILY USE



WARNING!

Refer to Safety chapters.

4.1 Heat setting

Sym-bols	Function
0	Off position
	Keep warm
1 - 9	Heat settings
	Double zone

1. To use the appliance, press the control knob. The control knob comes out.

2. Turn the knob to a necessary heat setting.

To complete the cooking process, turn the knob to the off position.

4.2 Activating and deactivating the outer rings

You can adjust the surface you cook to the dimension of the cookware.

To activate the outer ring: turn the knob clockwise through a light resistance to . Then turn the knob counterclockwise to the correct heat setting.

To deactivate the outer ring: turn the knob to the off position. The indicator goes out.

5. HINTS AND TIPS




WARNING!
Refer to Safety chapters.

5.1 Examples of cooking applications



The data in the table is for guidance only.

Heat setting	Use to:	Time (min)	Hints
 - 1	Keep cooked food warm.	as necessary	Put a lid on the cookware.
1 - 2	Hollandaise sauce, melt: butter, chocolate, gelatine.	5 - 25	Mix from time to time.
1 - 2	Solidify: fluffy omelettes, baked eggs.	10 - 40	Cook with a lid on.
2 - 3	Simmer rice and milkbased dishes, heat up ready-cooked meals.	25 - 50	Add at least twice as much liquid as rice, mix milk dishes halfway through the procedure.
3 - 4	Steam vegetables, fish, meat.	20 - 45	Add a couple of tablespoons of liquid.
4 - 5	Steam potatoes.	20 - 60	Use max. ¼ l of water for 750 g of potatoes.
4 - 5	Cook larger quantities of food, stews and soups.	60 - 150	Up to 3 l of liquid plus ingredients.
6 - 7	Gentle fry: escalope, veal cordon bleu, cutlets, rissoles, sausages, liver, roux, eggs, pancakes, doughnuts.	as necessary	Turn halfway through.
7 - 8	Heavy fry, hash browns, loin steaks, steaks.	5 - 15	Turn halfway through.
9	Boil water, cook pasta, sear meat (goulash, pot roast), deep-fry chips.		

6. TROUBLESHOOTING



WARNING!
Refer to Safety chapters.

6.1 What to do if...

Problem	Possible cause	Remedy
You cannot activate the appliance.	The appliance is not connected to an electrical supply or it is connected incorrectly.	Check if the appliance is correctly connected to the electrical supply.
You cannot activate the appliance.	The fuse is blown.	Make sure that the fuse is the cause of the malfunction. If the fuse is blown again and again, contact a qualified electrician.

6.2 Before the installation

If you cannot find a solution to the problem yourself, contact your dealer or an Authorised Service Centre. Give the data from the rating plate.

Make sure, you operated the appliance correctly. If not the servicing by a service

technician or dealer will not be free of charge, also during the warranty period. The instructions about the Service Centre and conditions of guarantee are at the end of this manual or in the guarantee booklet.

7. INSTALLATION



WARNING!
Refer to Safety chapters.

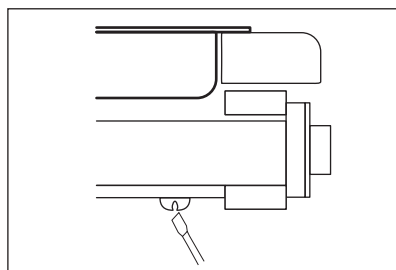
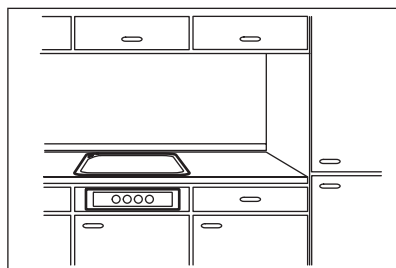
7.1 Hob and control-box connection type

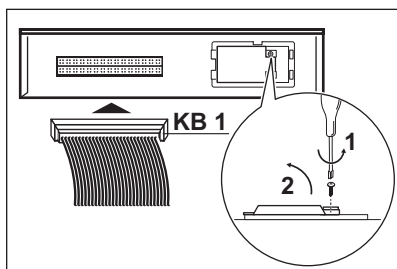
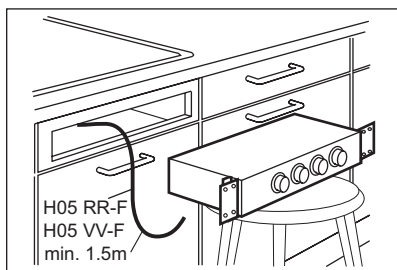
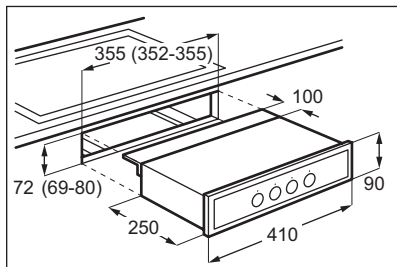
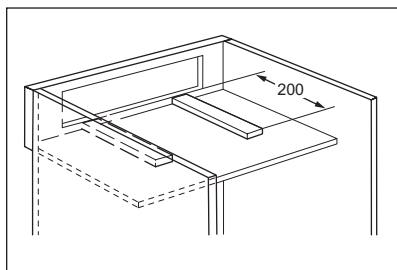
This appliance has a yellow 1x14 pole and orange 1x14 pole connector and can be connected to a hob with a yellow 1x14 pole and orange 1x14 pole connector.

7.2 Technical Information

Dimensions	
Height	90 mm
Width	410 mm

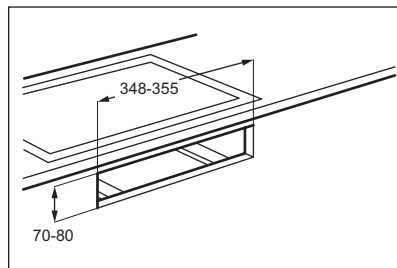
7.3 Assembly



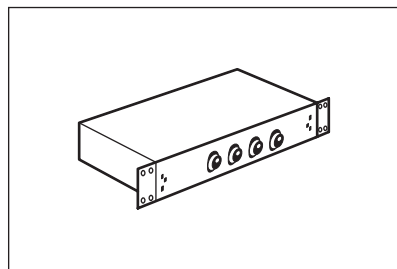


Assembly variation 1

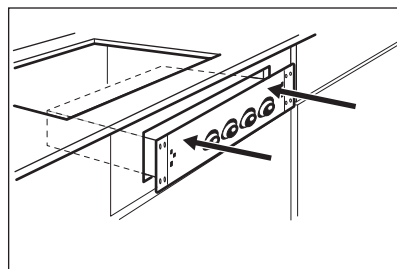
1.



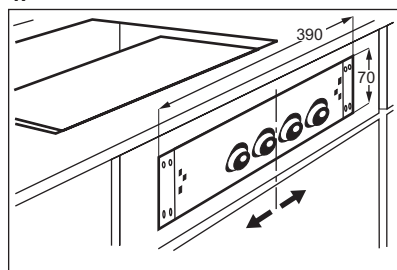
2.



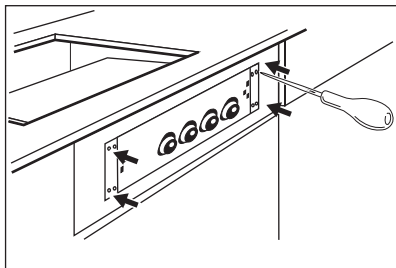
3.



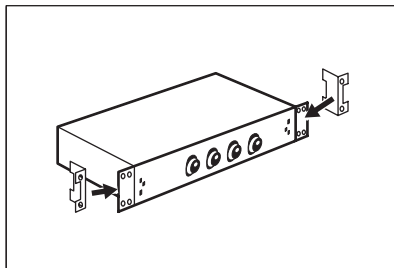
4.



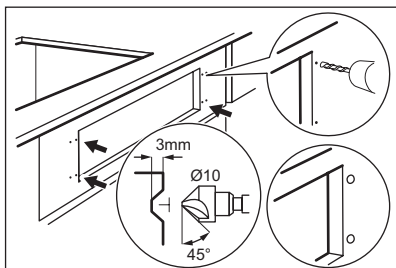
5.



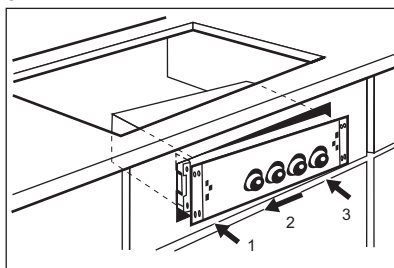
2.



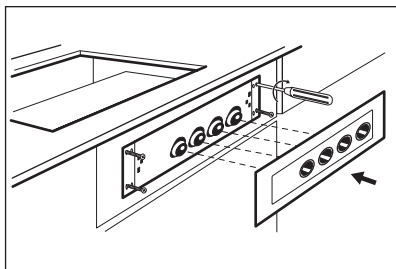
6.



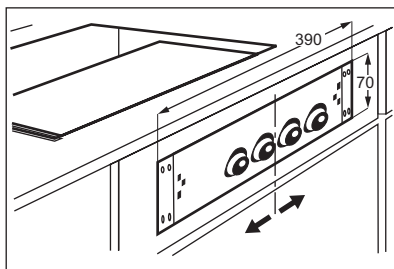
3.



7.

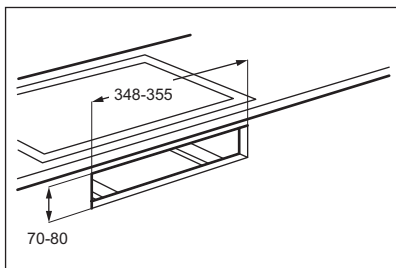


4.

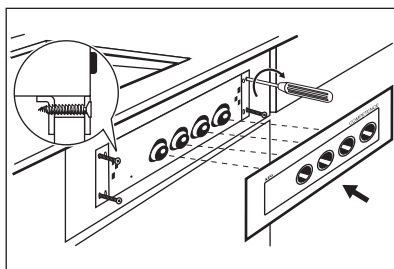


Assembly variation 2

1.



5.



7.4 Electrical connection



WARNING!

If service is required always disconnect the appliance from the power supply.

Use a power cable of H05VV-F or higher.

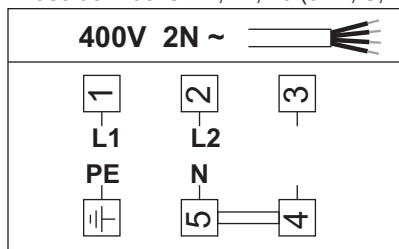
Install the appliance with a socket supply line. If there is no socket supply line, the fixed home electrical system must include an isolating device with at least a 3 mm-contact separation to enable a simultaneous and all-pole cut off from the mains (according to NIN SEV 1000). The customer must have a socket for the electrical connection that is accessible and outside the coordination room. The length of the connection cable must be approximately 120 cm with lines connected directly to the mains.



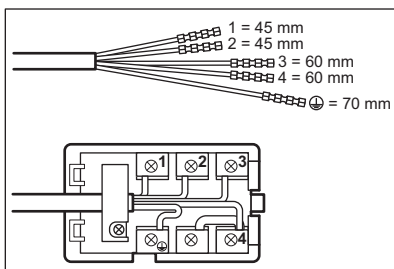
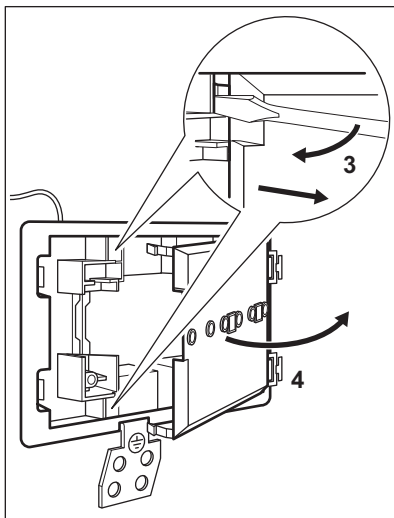
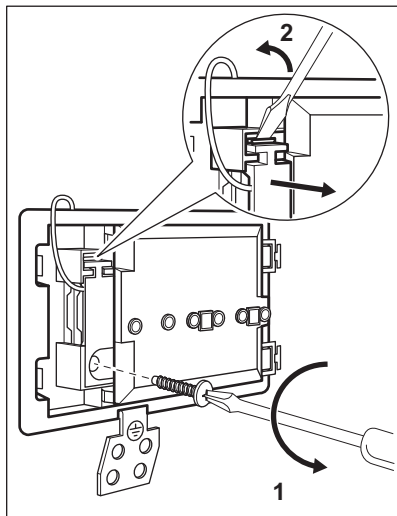
Only a qualified person can connect the appliance to the electricity supply.

1. Do the electrical connections as in the connection illustration.

Phase definitions: L1, L2, L3 (or R, S, T).



2. Secure the cable grip.



8. TECHNICAL DATA

8.1 Rating plate

Model ESSL4ICN
Typ 60 AXC 02 AO

Ser.Nr.
ELECTROLUX

PNC 949 596 668 00
230 / 400 V 50 Hz
Made in Germany
7.4 kW



9. GUARANTEE

Customer Service Centres

Point of Service		
Industriestrasse 10 5506 Mägenwil	Le Trési 6 1028 Préverenges	Via Violino 11 6928 Manno
Morgenstrasse 131 3018 Bern		
Zürcherstrasse 204E 9000 St. Gallen		
Seetalstrasse 11 6020 Emmenbrücke		
Schlossstrasse 1 4133 Pratteln		
Comercialstrasse 19 7000 Chur		





Spare parts service Industriestrasse 10,
5506 Mägenwil, Tel. 0848 848 111

Specialist advice/Sale Badenerstrasse
587, 8048 Zürich, Tel. 044 405 81 11

Warranty For each product we provide a
two-year guarantee from the date of
purchase or delivery to the consumer
(with a guarantee certificate, invoice or
sales receipt serving as proof). The

guarantee covers the costs of materials,
labour and travel. The guarantee will
lapse if the operating instructions and
conditions of use are not adhered to, if
the product is incorrectly installed, or in
the event of damage caused by external
influences, force majeure, intervention by
third parties or the use of non-genuine
components.

10. ENVIRONMENTAL CONCERNS

Recycle materials with the symbol 
Put the packaging in relevant containers
to recycle it. Help protect the
environment and human health by
recycling waste of electrical and
electronic appliances. Do not dispose of
appliances marked with the symbol 
with the household waste. Return the

product to your local recycling facility or
contact your municipal office.



For Switzerland:

Where should you take your old equipment?

Anywhere that sells new equipment or hand it in to official SENS collection points or official SENS recycling firms.

The list of official SENS collection points can be found at www.erecycling.ch

www.electrolux.com/shop



867333647-A-362017

